

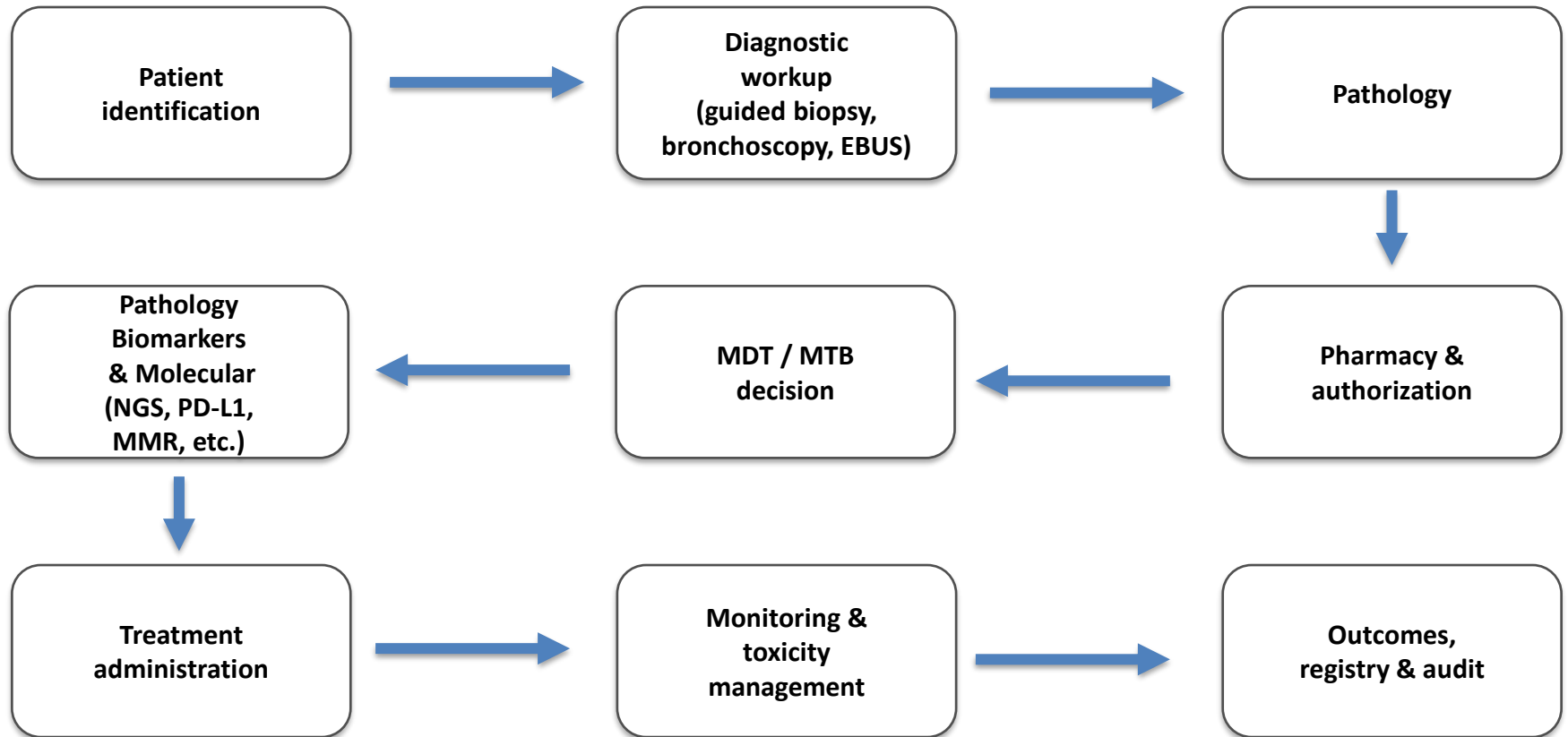
Capacity, Building & Interdisciplinary Training for Novel Therapies in Secondary Care

Andreas Mamilos



Capacity Building & Interdisciplinary Training for Novel Therapies in Secondary Care

Innovation is not a drug. It is a system capability.



Context and institutional setting for innovation and training.

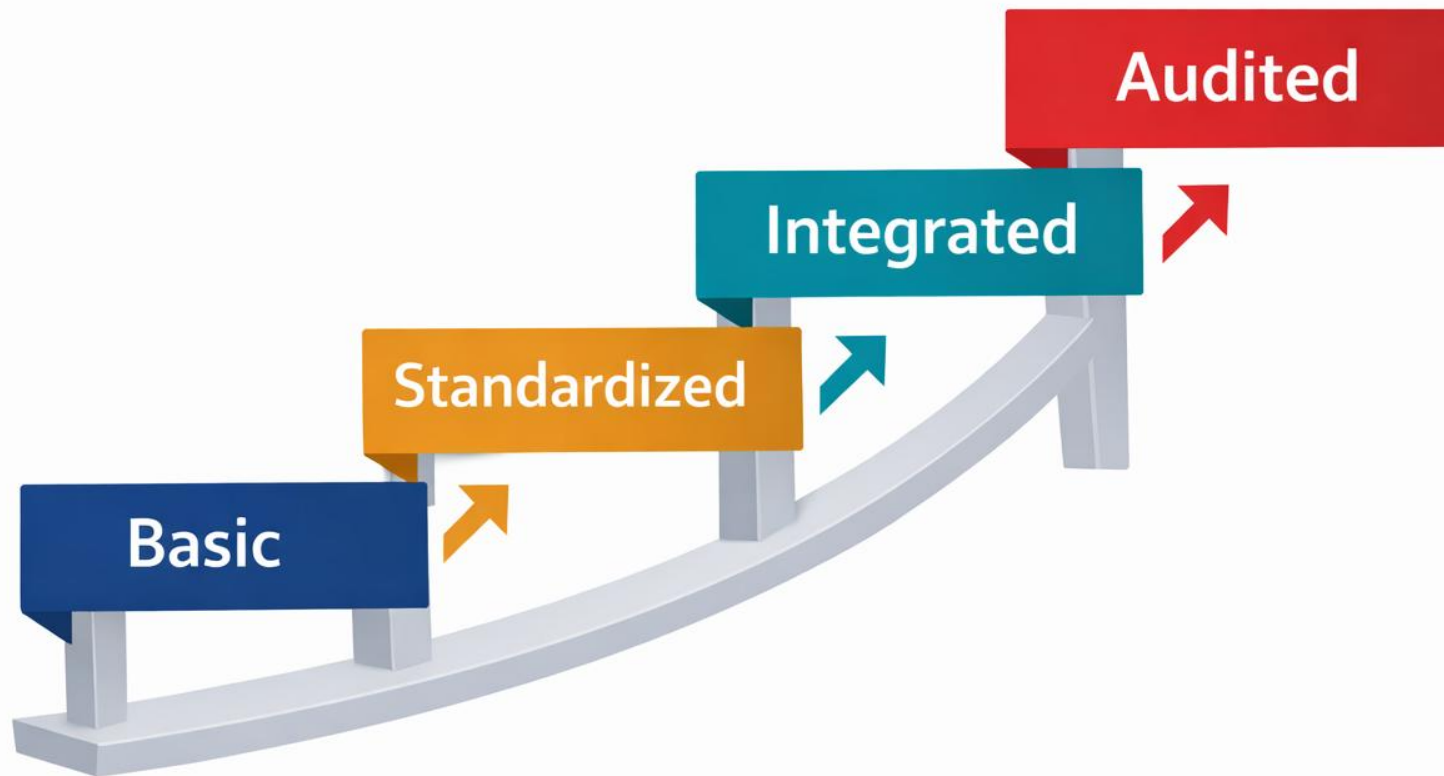
Why Innovative Therapies Challenge Secondary Care

Innovation drives complexity, not only outcomes.



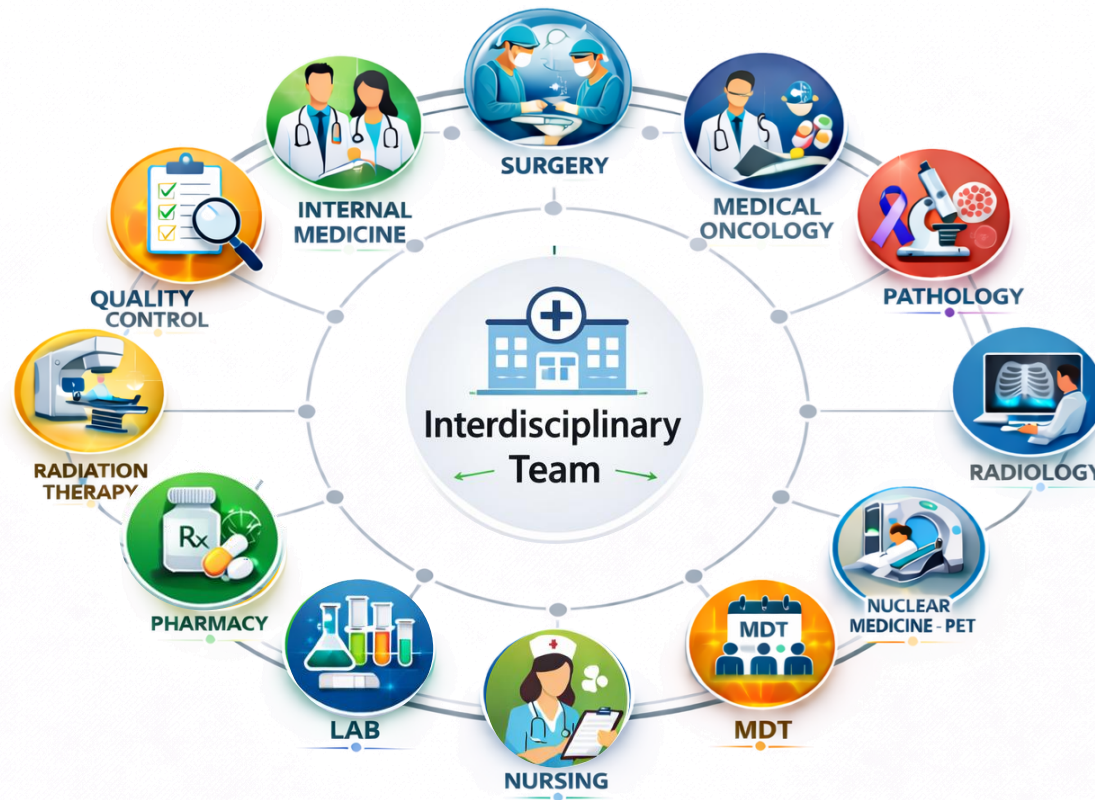
What Capacity Building Really Means

From individual competence to system capability.



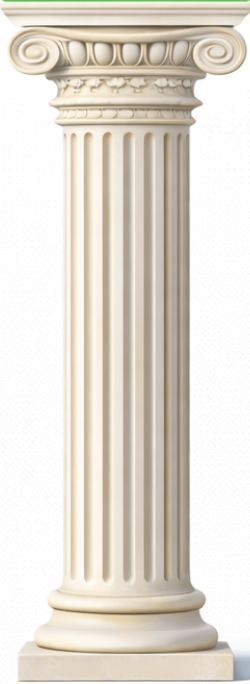
Why Interdisciplinary Training Is Essential

Quality depends on the chain, not the strongest link.

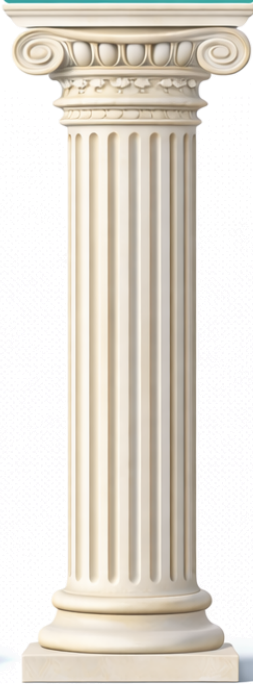


A SIX-Pillar Readiness Framework

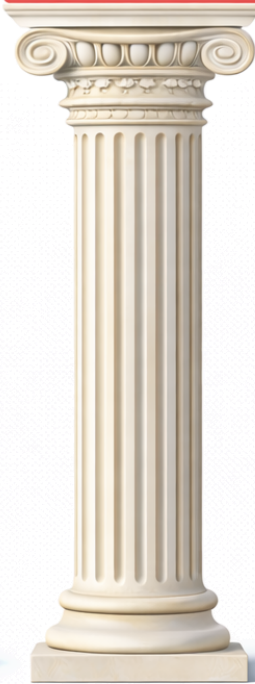
Diagnostic



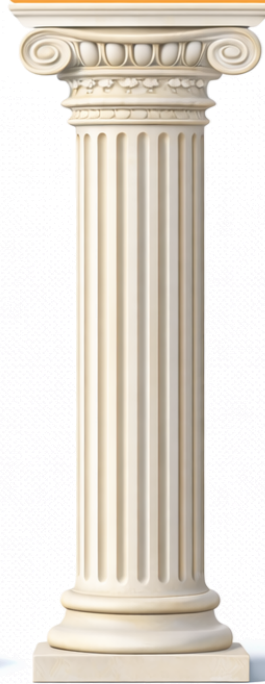
Therapy



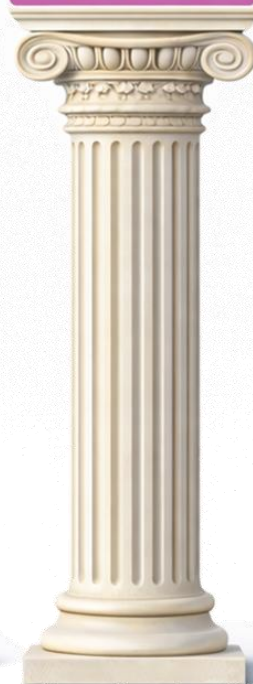
Operational



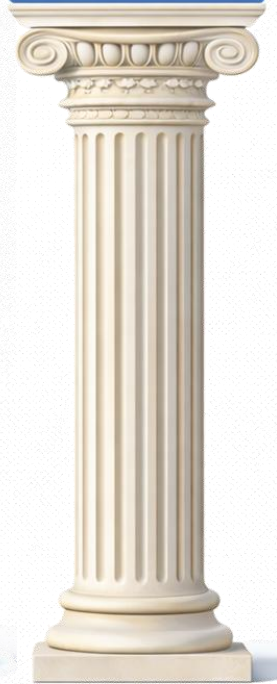
Governance



Research



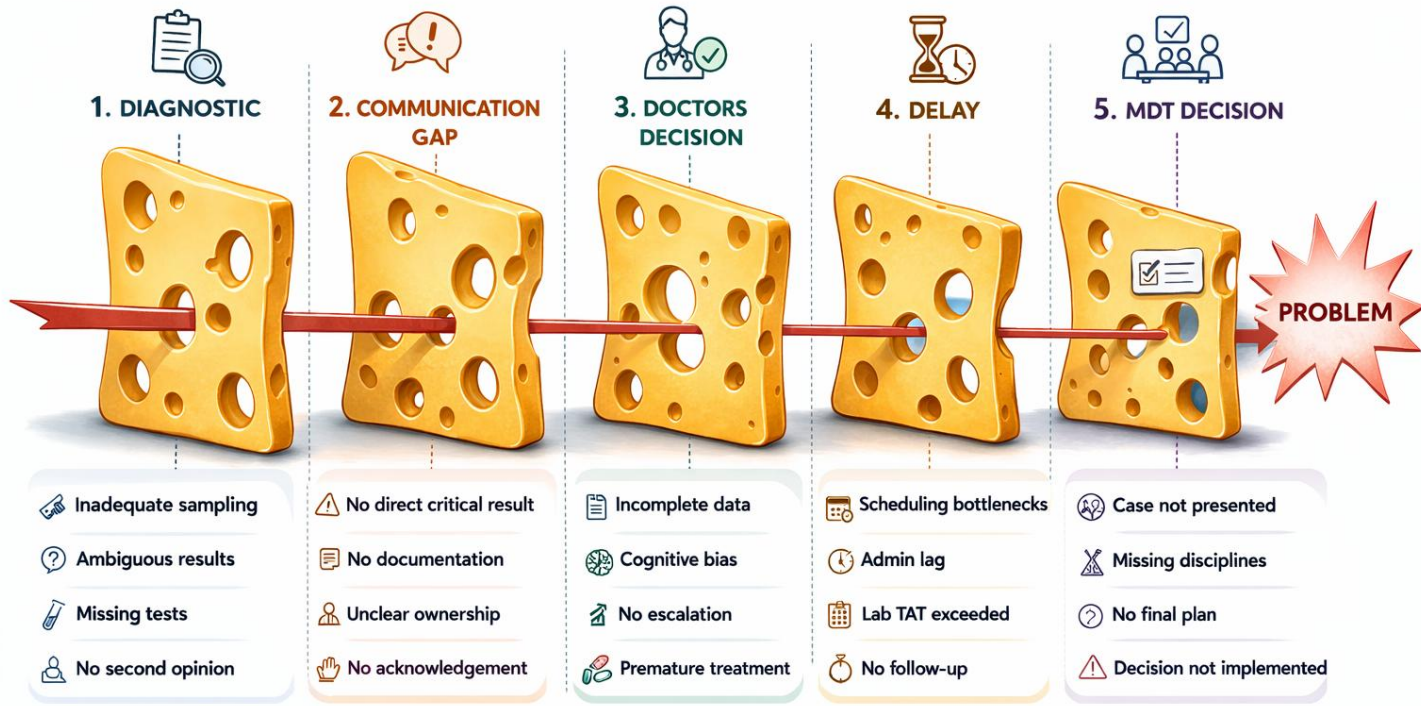
Education



From Theory to Practice

Where innovation typically fails upstream.

Swiss Cheese Model – Pathway to the Problem



→ Path of failure – when holes align, the problem reaches the patient

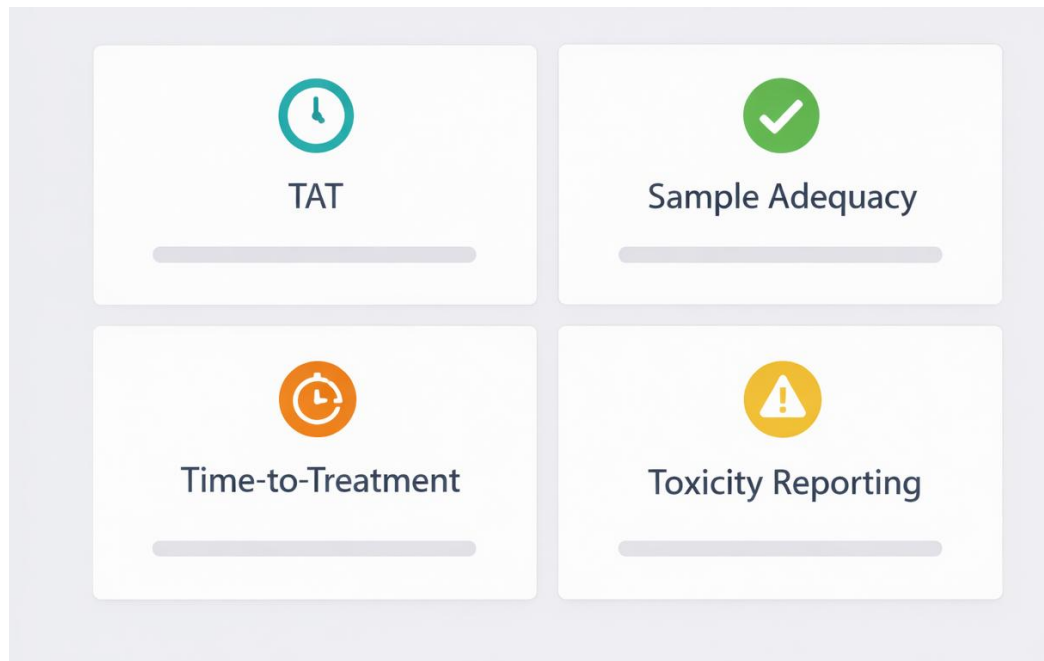
What Modern Training Looks Like

From lectures to embedded practice.

Meaningful Metrics

If you cannot measure it, you cannot improve it.

KPI'S



Closing Message

Building systems ready for today and tomorrow...

